

National Carbon Market Strategy Roadmap Consultation

Workshop II

Holiday Inn

August, 14th-15th 2023



Strengthening Access to Information,
Communication,
and Awareness Building for Local
Communities and
Landowners



Mandate

- an independent statutory established by the iTaukei Affairs Act in 1945, with a mandate to *"Ensure effective and efficient participation of the iTaukei in the nation's peace, progress and prosperity"* and *"oversee the well being and good governance of Fijian communities."*
- works both directly with communities on priority issues as well as through the coordination of Provincial Offices in each of Fiji's fourteen provinces.

Vision

"A Transformed iTaukei Family for a Better Fiji"



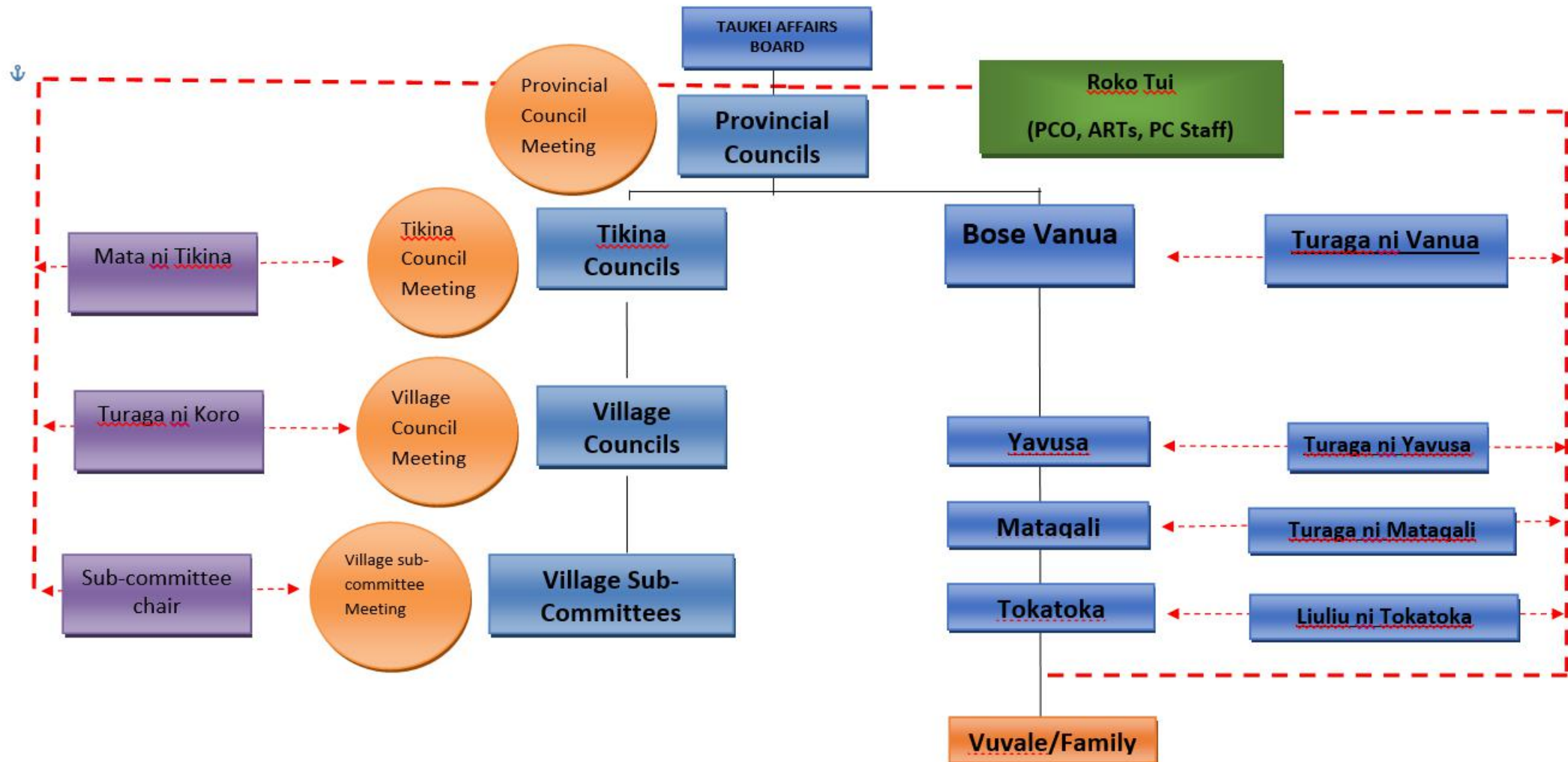
DIFFERENCES IN INSTITUTIONAL FUNCTIONS

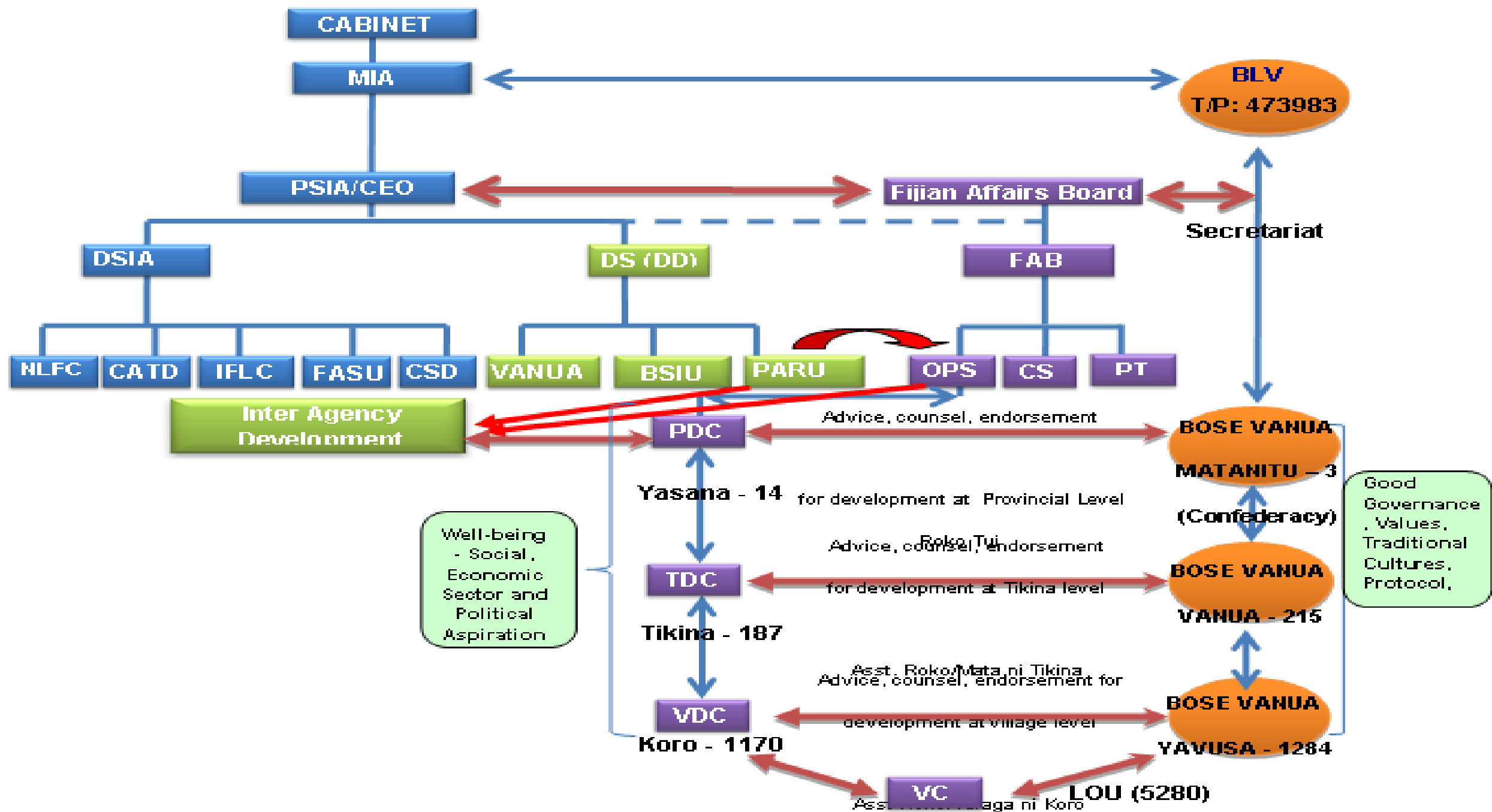
- » iTaukei Affairs Act Cap 120:
 - Section 4 includes the Board's major roles: "good governance and well being" of the iTaukei
- » iTaukei Affairs (iTaukei Affairs Board) Regulations 1996
 - "a. consider such draft legislation and other matters relating to the rights, interests, health, welfare (social and economic), peace, order and good government of the iTaukei as the Minister from time to time refer to the Board, and take decision or make recommendations thereon to the Minister;
 - b. consider resolutions relating to the same matters as are set out in sub paragraph (a) which members (and iTaukei Institutions) may submit to the Chairperson at least two weeks before the date of the next meeting of the Board and take decisions or make recommendations thereon to the Minister;
 - c. Monitor all developments carried out in the Provinces and to ensure that such developments are in accordance with and reflect the development policies and strategies formulated by the Government."



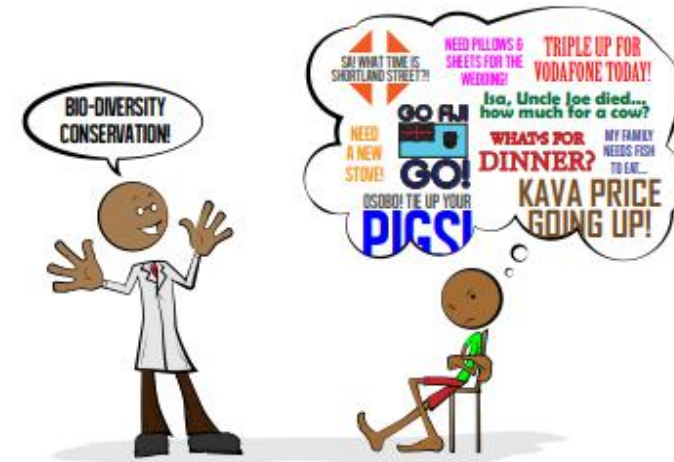
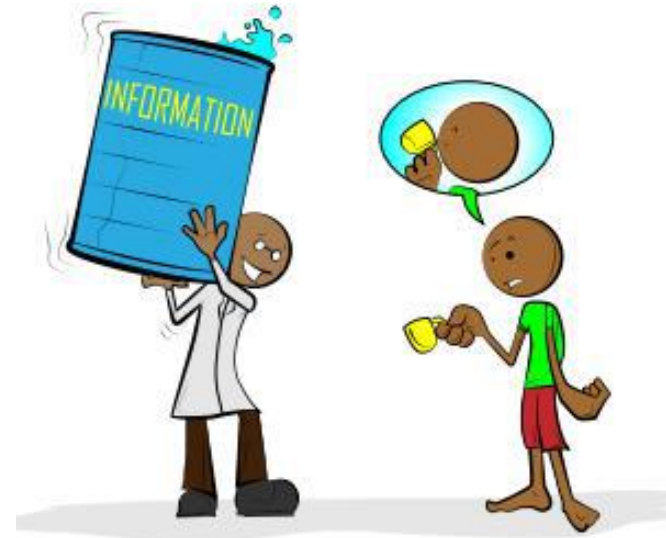
Enhancing engagement with local communities

STRUCTURE OF THE ITAUKEI ADMINISTRATION





- » Ability to meet daily needs
- » Ability to meet family obligations
- » Income to better children's education
- » Better standard of living
- » Ability to meet obligations to church and vanua
- » Community health and cohesion, including maintaining culture and identity



TLTB - Legal Framework



- iTaukei Land Trust Board (TLTB), previously known as the NLTB was established in 1940 to administer and control all iTaukei (native) lands in Fiji.
- It draws its mandate from Section 4 (1) of the iTaukei Land Trust Act (Cap 134) to be the largest landlord with 91% of Fiji's total landmass.
- The TLTB Board of Trustees under the statute has the **fiduciary role** to act in the best interest of all the iTaukei landowners.

Why Land Use Planning is Important for the Board?

TLTB CORE ROLES

1

To control and manage itaukei land by way of leases and licences

2

To collect and distribute premiums and rents derived from leased land

3

To ensure that sufficient land are "reserved" for the use, maintenance and support of its owners

TLTA ACT PART II: CONTROL OF NATIVE LAND:

S4.-(1) The control of all native land shall be vested in the Board and all such land shall be administered by the Board for the benefit of the Fijian owners.

S9. No iTaukei land shall be dealt with by leases and license...unless the Board is satisfied that the land proposed to be made the subject of such lease and license is not being beneficially occupied by the iTaukei owners, and is not likely in the currency of the lease or license to be required by the iTaukei owners for their use, maintenance, and support



LAND USE PLANNING



LAND USE PLANNING WITH OUR LANDOWNERS



1

**ITAUKEI
RESERVE LAND**

2

**LAND OUTSIDE
RESERVE**

**THESE ARE THE
BASIS OF LAND USE
PLANNING CARRIED
OUT BY THE BOARD**



1

**DESCRIBE & DEFINE
ITAUKEI LAND
BOUNDARIES &
OWNERSHIP**



HIERARCHY OF PLANNING WITHIN TLTB

VISION:

**ONE MAP
FIJI!**



REGIONAL

**DISTRICT
(TIKINA)**

**LAND OWNING
UNIT (LOU)**

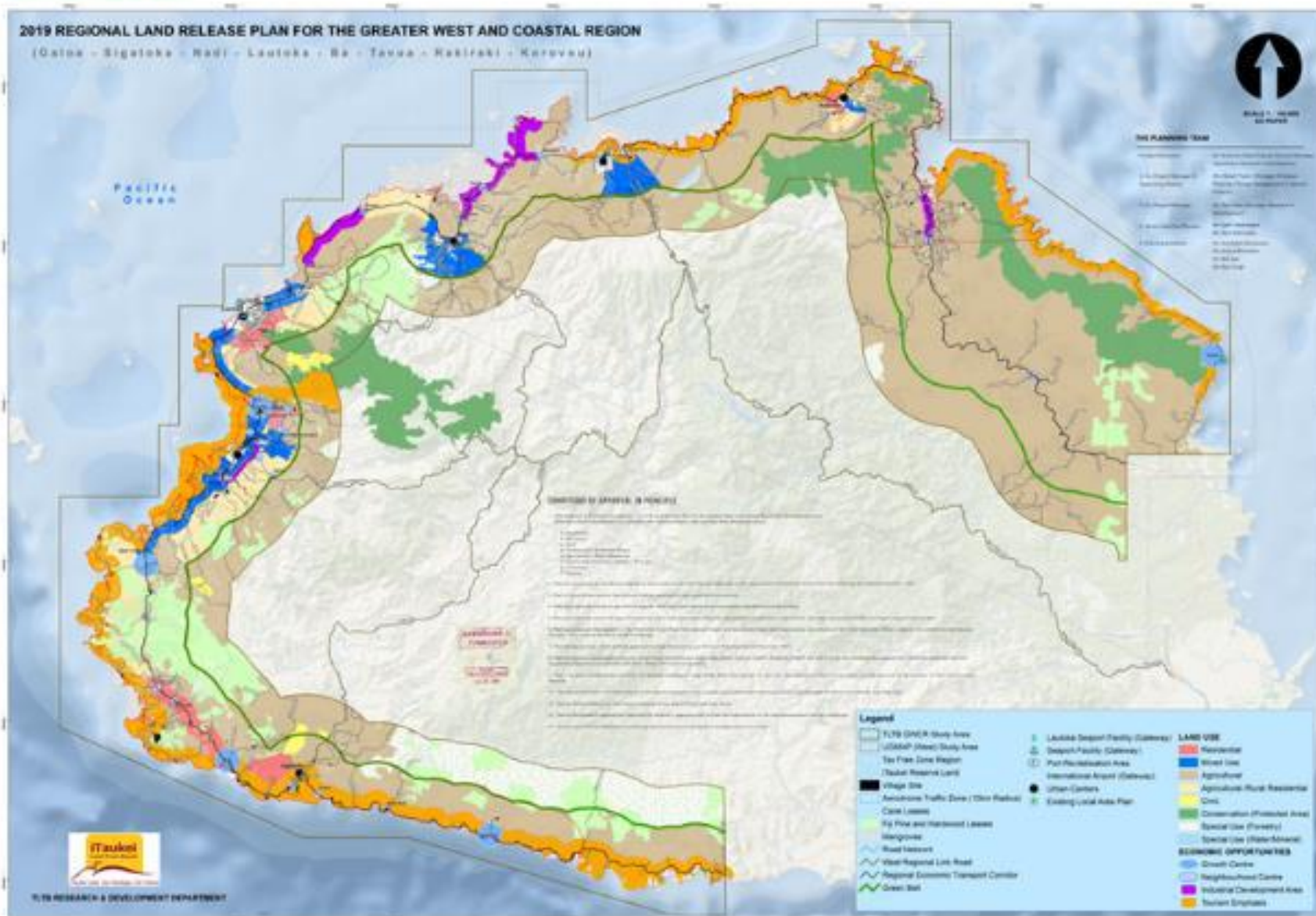


National Level





HIERACHY OF PLANNING WITHIN TLTB

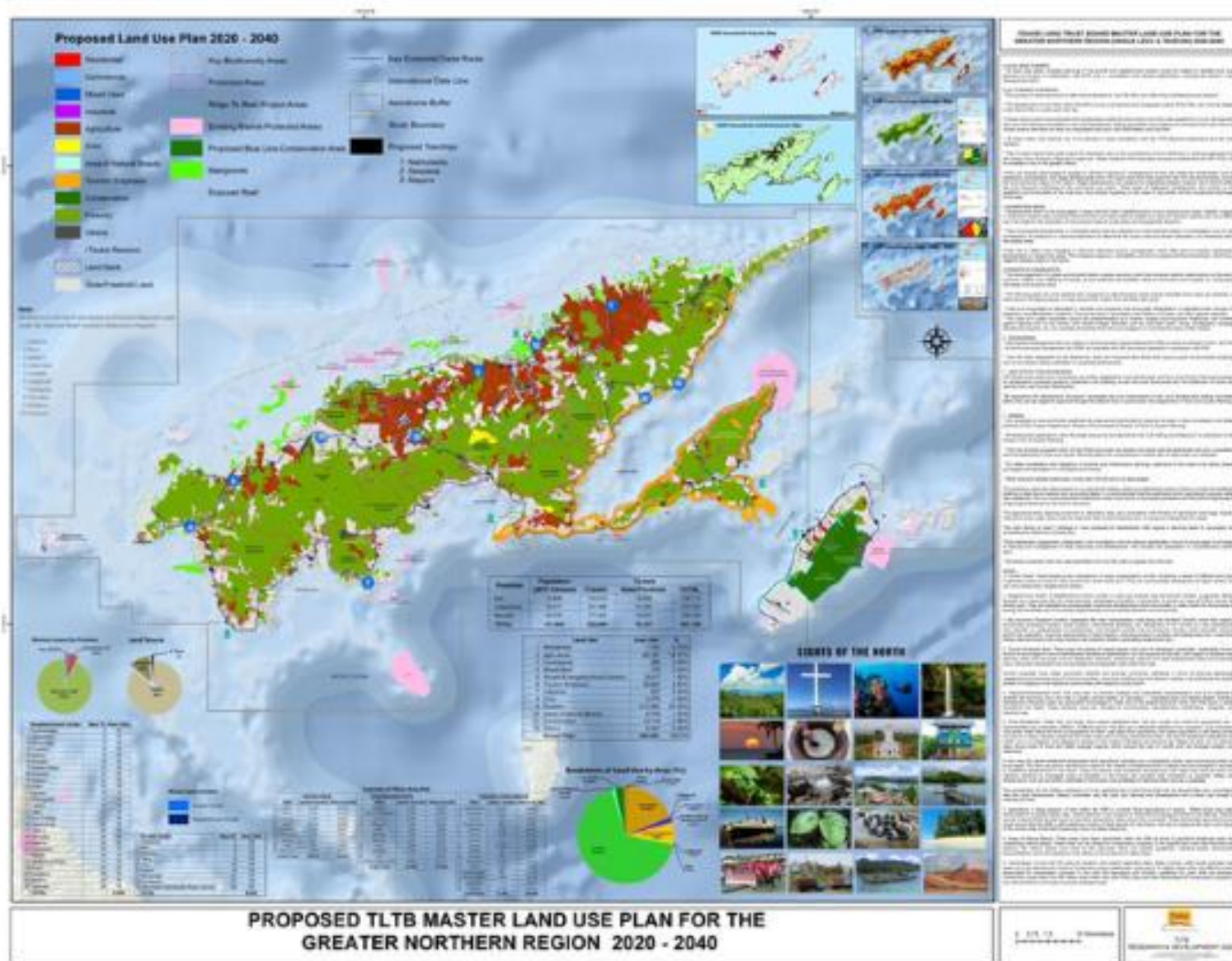


Regional Master Plan

Greater West Master Plan

Approved July 2020

HIERACHY OF PLANNING WITHIN TLTB

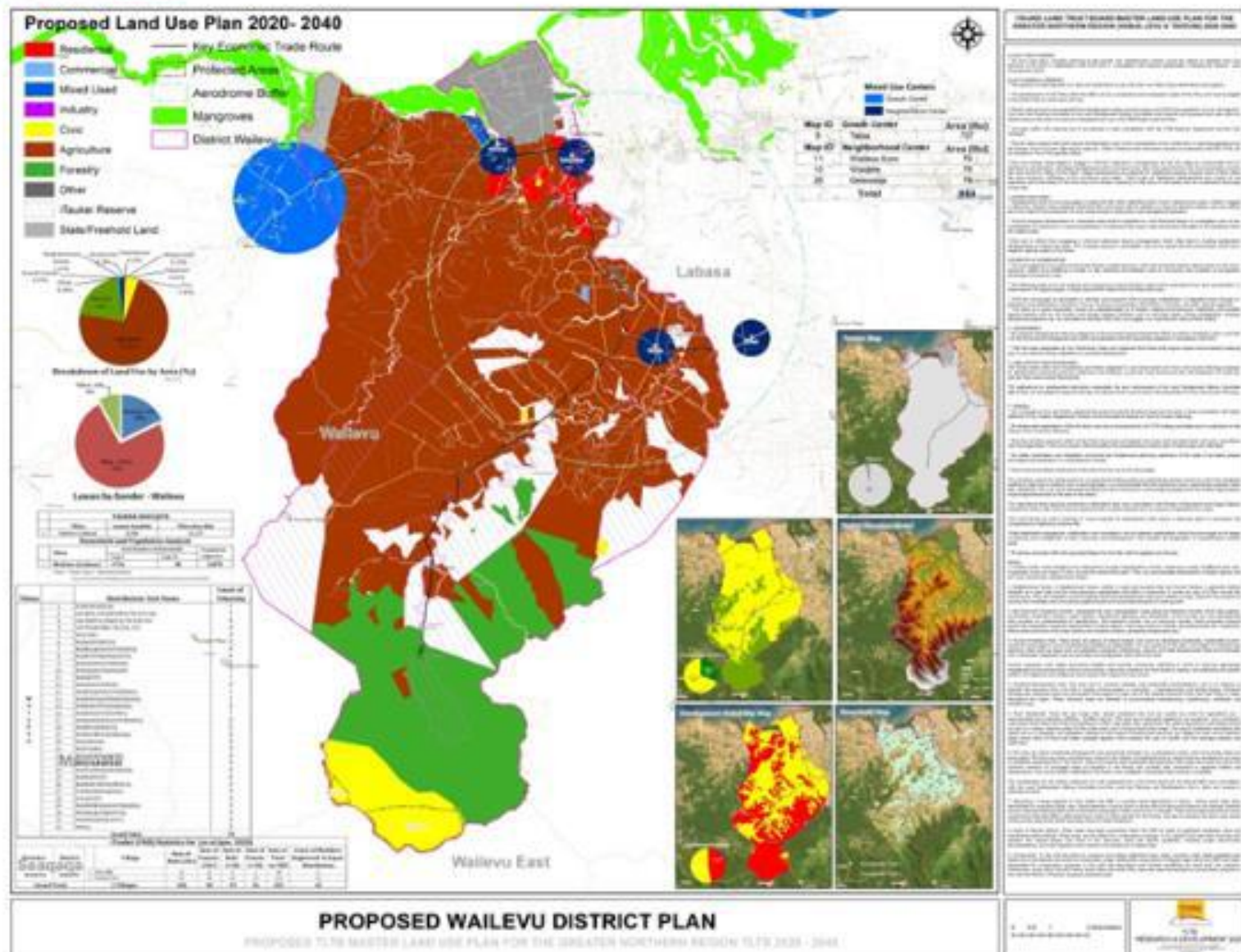


Regional Master Plan
Greater North Master Plan
Approved December 2021

Tikina Consultation



HIERACHY OF PLANNING WITHIN TLTB



District (Tikina) Advisory Land Use Plans

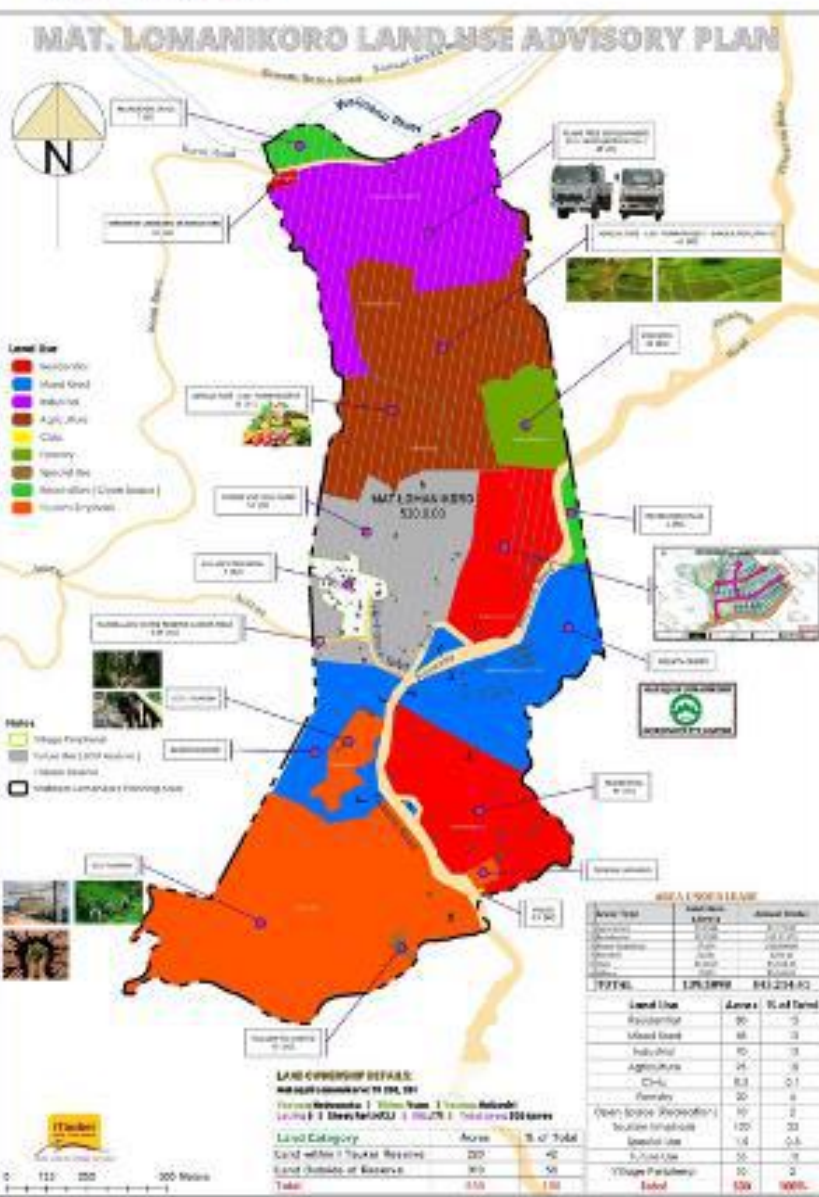
- 36 Tikinas for the North (Completed)
- District Plans for Viti Levu (Ongoing)



LOU Consultation in Towns



HIERACHY OF PLANNING WITHIN TLTB



LOU Land Use Advisory Plans

- TLTB assists in scheme planning, leasing, and land development
- Platform for COLLABORATION with key stakeholders, developers/investors, etc.
- Basis for LOU Development & Management Plan
- "One-Stop Shop" Information Centre for LOU members

OUR LANDOWNERS & LAND USE PLANNING

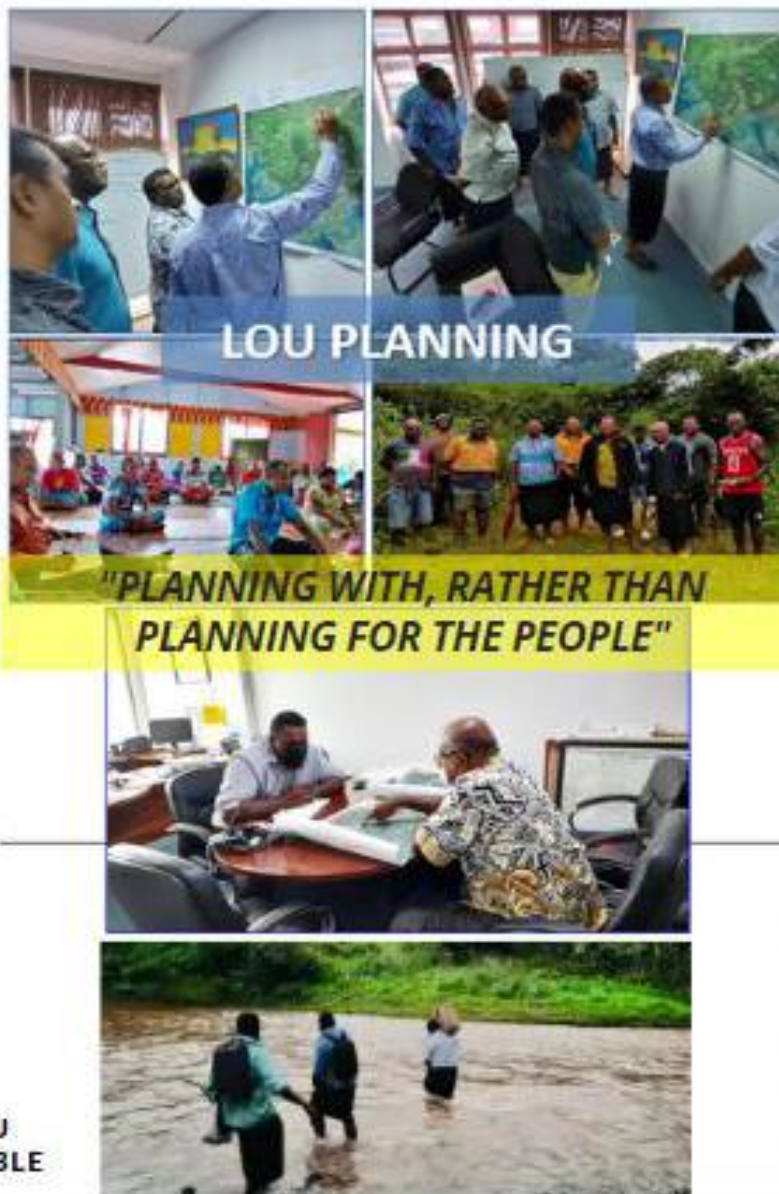


235

TOTAL NO. OF LOU
ENGAGED 2022

77

TOTAL NO. OF LOU
WITH LAND AVAILABLE





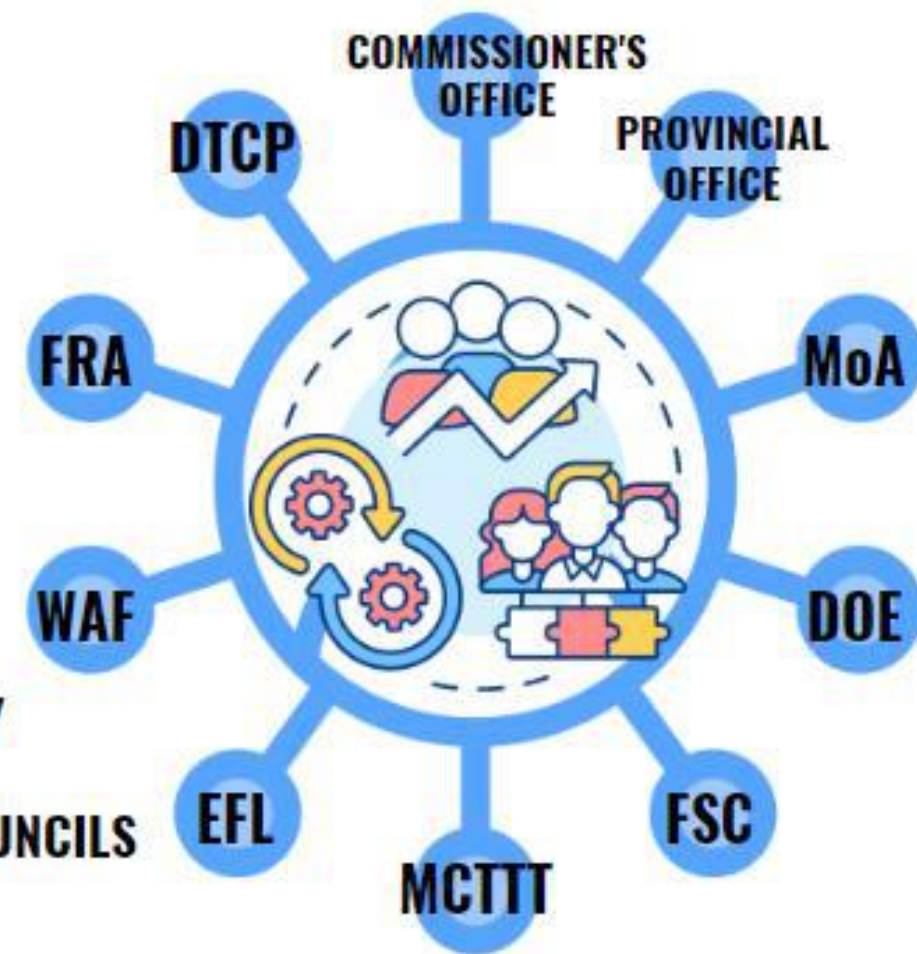
BASIS FOR LOU PLANNING



LOU Planning: Digital TLTB – Mapping of all LOU Plans for the 5000+

- Returning the endorsed LOU Plans to all LOUs
- Charting of LOU Plans in our GIS system
- Collaboration with stakeholders
- Survey of NLC boundary for LOUs

Stakeholder Collaboration/Onboarding





Vinaka Vakalevu

Any questions?

talei.kocovanua@govnet.gov.fj
jwaqanivalu@tltb.com.fj